

# **TOROS**

## **MULTIFUNCTIONAL CRAWLER MINI EXCAVATOR**



**SHANDONG TOROS MACHINERY CO., LTD**

Phone: 0086 151 0537 1080

E-Mail: [sales@torosce.com](mailto:sales@torosce.com)

Web: [www.torosce.com](http://www.torosce.com)

Add: No.2-3, Nangzhang Industrial Park, Jining, Shandong, China

SHANDONG TOROS MACHINERY CO., LTD



# COMPANNY PROFILE

TOROS, located in Jining city which is a traditional machinery industry base, also is civilized and honored as the birth place of Confucius and Mencius. The company is a joint of manufacturer and exporter. Our major products include compact

excavators, mini road rollers, plate compactors, concrete equipment, etc. The company has more than 20 senior engineering design experts and more than 20 personnel's R&D team. Strong technical force, advanced manufacturing technology, complete test methods, make the products well received of the majority of customers. We insist that "quality and credibility is the foundation of survival", and truly believe to provide services not to be the best, but to be better. TOROS is willing to join hands with friends from all over the world.

# SERVICE



Support OEM, ODM



Factory Direct Sales to Ensure Quality And Price



365 Days Warranty Service



24/7 one-on-one professional after-sales guide online

# CERTIFICATION



# ZERO-TAIL DESIGN

Tailless model excavator, low fuel consumption, flexible and convenient operation, suitable for small space operations.

Hydraulic pilot operation is more flexible and convenient, and the working performance is more stable.

Engine cover clamshell design durable and easy to maintain.



# TE-18S MINI EXCAVATOR



## PRODUCT DETAIL

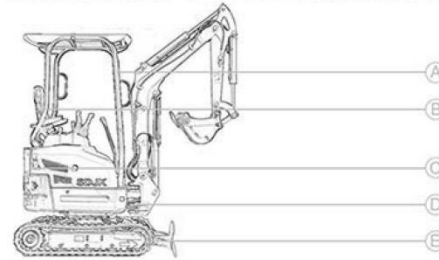


The TE-18S model bagger adopts Kubota D902 diesel engine, meets Euro V and EPA4 emission standards, meets environmental protection requirements, Low noise, Kubota engine parts are universal.

### PRODUCT INFORMATION

Here are the key specifications for this product model.

Bucket Capacity	0.04m <sup>3</sup>	Engine	Kubota D90
Excavator Width	1100mm	Engine Power	11.8kw/2200rpm
Track Length	1450mm	Turning Radius	1660mm
Crawler Material	Rubber/steel tracks	Max.Digging Height	3310mm
Gradeability	58(30)°	Max.Dumping Height	2370mm
Track Width	230mm	Max.Digging Depth	2120mm
Fuel Tank Capacity	18L	Max.Digging Radius	3570mm
Transport Length	3300mm	Max.Vertical Digging Depth	1535mm
Multi-way Valve	Traveling Motor	Weight	1550kg
Excavator Height	2360mm	Swing Motor	Hydraulic Pump
		Overall Dimension(LxWxH)	2900*1100*1550mm



#### Canopy

Use four-point supportsafe and stableThe canopy is detachable ,and also can choose to install the cab.



#### Boom Side Swing

Meet the needs of small space operationsthe digger body does not move , only need toadjust the angle of the boom..



#### Ergonomically Designed Seat

Maximum freedom of movement due toextra-large legroom .



#### Rubber Track

Built-in steel core, wear-resistant and durable, easy to replace, and also can choose to replace the steel track.



#### Easy to Maintain

The tail of bagger can be opened , andeasy maintenance without opening theseat of the excavator.



# TE-20S MINI EXCAVATOR



## PRODUCT DETAIL

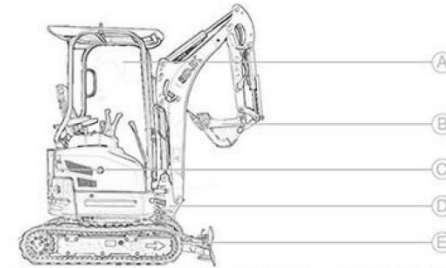


TE-20S model, tailless design, flexible and convenient operation. Three-sided spray paint, anti-oxidation and anti-exposure, better appearance.

### PRODUCT INFORMATION

Here are the key specifications for this product model.

Bucket Capacity	0.04m <sup>3</sup>	Engine	YANMAR370/KubotaD902
Excavator Width	990/1240 mm	EnginePower	10.3 KW/2200rpm 11.8 KW/2200rpm
Track Length	1585mm	Turning Radius	1430mm
Chassis Ground Clearance	145mm	Max.Digging Height	3540mm
Crawler Material	Rubber/steel tracks	Max.Dumping Height	2440mm
Gradeability	30°	Max.Digging Depth	2310mm
Track Width	230mm	Max.Digging Radius	3840mm
Volume of fuel tank	18L	Max.Vertical Digging Depth	1910mm
MAX.digging Force	14.8 KN	Bucket excavating force	11kN
Multi-way Valve	Traveling Motor	Weight	1760 kg; 1920kg
Excavator Height	2250mm	Swing Motor	Hydraulic Pump
		Overall Dimension( LxWxH)	3570*990*2250mm



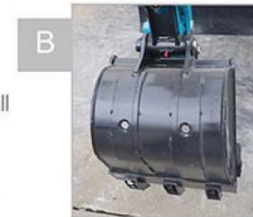
### Canopy

Use four-point supportsafe and stableThe canopy is detachable ,and also can choose to install the cab.



### Boom Side Swing

Meet the needs of small space operations the digger body does not move , only need to adjust the angle of the boom.



### Bucket Teeth

Bucket teeth are made from high-tensileand wear-resistant steel plates.



### Dozer blade

Clear roadblocks, support the machine, more stable.



### Easy to Maintain

The tail of bagger can be opened , andeasy maintenance without opening theseat of the excavator.



# TE-26S MINI EXCAVATOR



## PRODUCT DETAIL

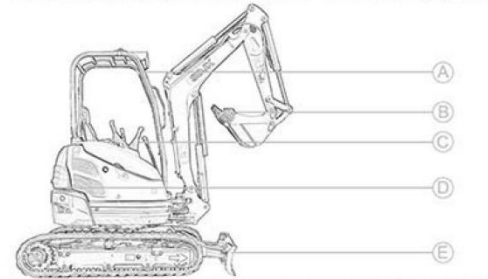


TE-26S model, has different colors for choose and the color can also be customized according to customer requirements. Three-sided spray paint, anti-oxidation and anti-exposure, better appearance.

### PRODUCT INFORMATION

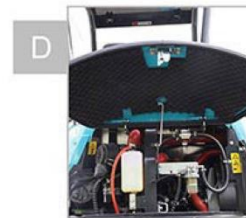
Here are the key specifications for this product model.

Bucket Capacity	0.066m <sup>3</sup>	Multi-way Valve	Two-speed Traveling Motor
Excavator Width	1300mm stretch 1500mm	Engine	YANMAR 3TNV76
Track Length	1860mm	EnginePower	15kw/2400rpm
Chassis Ground Clearance	170mm	Turning Radius	1850mm
Crawler Material	Rubber/steel tracks	Max.Digging Height	3880mm
Gradeability	30°	Max.Dumping Height	2550mm
Track Width	250mm	Max.Digging Depth	2320mm
Excavator Height	2380mm	Max.Digging Radius	4015mm
MAX.digging Force	18.4KN	Max.Vertical Digging Depth	1900mm
Overall Dimension( LxWxH)	3850*1300*2380mm	Fuel Tank Capacity	28L
		Weight	2480kg
		Swing Motor	Taifeng Plunger Hydraulic Pump



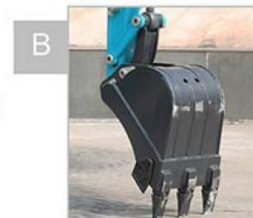
### Canopy

Use four-point supportsafe and stableThe canopy is detachable ,and also can choose to install the cab.



### Clamshell Design

Engine cover clamshell design durable and easy to maintain.



### Bucket Teeth

Bucket teeth are made from high-tensileand wear-resistant steel plates.



### Dozer blade

Clear roadblocks, support the machine, more stable.



### Hydraulic Pilot Operation

Hydraulic pilot operation is more effortless, flexible and convenient.



# TE-28S MINI EXCAVATOR



## PRODUCT DETAIL

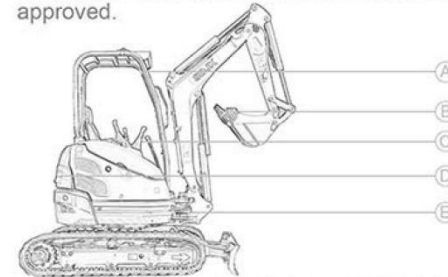


TE-28S model, can be widely used in various construction projects such as water supply, power supply, gas supply, telecommunication network, farmland and garden works etc. All machines are CE approved.

### PRODUCT INFORMATION

Here are the key specifications for this product model.

Bucket Capacity	0.066m <sup>3</sup>	Multi-way Valve	Two-speed Traveling Motor
Excavator Width	1300mm stretch 1500mm	Engine	YANMAR 3TNV76
Track Length	1860mm	EnginePower	15kw/2400rpm
Chassis Ground Clearance	170mm	Turning Radius	2004mm
Crawler Material	Rubber/steel tracks	Max.Digging Height	4122mm
Gradeability	30°	Max.Dumping Height	2882mm
Track Width	250mm	Max.Digging Depth	2820mm
Excavator Height	2380mm	Max.Digging Radius	4246mm
MAX.digging Force	18.4KN	Max.Vertical Digging Depth	2300mm
Overall Dimension( LxWxH)	3982*1300*2380mm	Fuel Tank Capacity	28L
		Weight	2590kg
		Swing Motor	Taifeng Plunger Hydraulic Pump



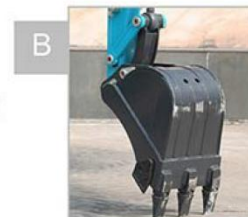
### Canopy

Use four-point supportsafe and stableThe canopy is detachable ,and also can choose to install the cab.



### Clamshell Design

Engine cover clamshell design durable and easy to maintain.



### Bucket Teeth

Bucket teeth are made from high-tensileand wear-resistant steel plates.



### Boom Side Swing

The digger body does not move, only need to adjust the angle of the boom to complete the precision work.



### Hydraulic Pilot Operation

Hydraulic pilot operation is more effortless, flexible and convenient.



# TE-35S MINI EXCAVATOR



## PRODUCT DETAIL

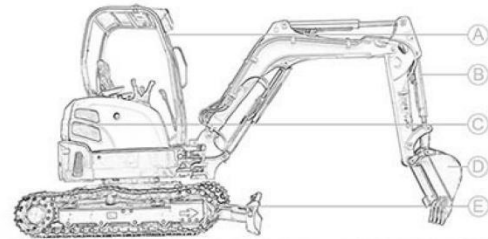


TE-35S small excavator is equipped with the Japanese Yanmar 3TNV88 three-cylinder water-cooled engine, which has strong power and good water-cooling heat dissipation effect.

### PRODUCT INFORMATION

Here are the key specifications for this product model.

Bucket Capacity	0.09m <sup>3</sup>	Multi-way Valve	Two-speed Traveling Motor
Excavator Width	1550mm	Engine	YANMAR 3TNV88
Track Length	2100mm	EnginePower	19.6kw/2400rpm
Chassis Ground Clearance	290mm	Turning Radius	2035mm
Crawler Material	Rubber/steel tracks	Max.Digging Height	4600mm
Gradeability	30°	Max.Dumping Height	3175mm
Track Width	300mm	Max.Digging Depth	2880mm
Excavator Height	2440mm	Max.Digging Radius	4845mm
MAX.digging Force	26.5KN	Max.Vertical Digging Depth	2305mm
Overall Dimension( LxWxH)	4485*1550*2440mm	Fuel Tank Capacity	40L
		Weight	3375kg
		Swing Motor	Taifeng Plunger Hydraulic Pump



### Canopy

Use four-point supportsafe and stableThe canopy is detachable ,and also can choose to install the cab.



### Bucket Teeth

Bucket teeth are made from high-tensileand wear-resistant steel plates.



### Cylinder

The lifting arm cylinder is protected from damage by a piston rod protector made of synthetic material. This saves repair costs and time.



### Steel Track

Steel track can effectively alleviate the working vibration and is suitable for a variety of environment.



### Clamshell Design

Engine cover clamshell design durable and easy to maintain.



# TE-35S

+Close Cabin



## PRODUCT DETAIL



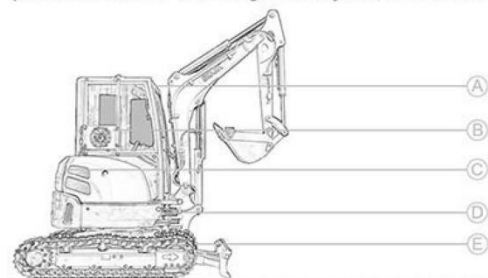
Equipped powerful engine and perfectly matched hydraulics provide efficient, economical and reliable performance for the toughest of jobs, and a wide range of adaptability.

### PRODUCT INFORMATION

Here are the key specifications for this product model.

Bucket Capacity	0.09m <sup>3</sup>
Excavator Width	1550mm
Track Length	2100mm
Chassis Ground Clearance	290mm
Crawler Material	Rubber/steel tracks
Gradeability	30°
Track Width	300mm
Excavator Height	2440mm
MAX.digging Force	26.5KN
Overall Dimension( LxWxH)	4485*1550*2440mm

Multi-way Valve	Two-speed Traveling Motor
Engine	YANMAR 3TNV88
EnginePower	20.5kw/2400rpm
Turning Radius	2035mm
Max.Digging Height	4600mm
Max.Dumping Height	3175mm
Max.Digging Depth	2880mm
Max.Digging Radius	4845mm
Max.Vertical Digging Depth	2305mm
Fuel Tank Capacity	40L
Weight	3515kg
Swing Motor	Taifeng Plunger Hydraulic Pump



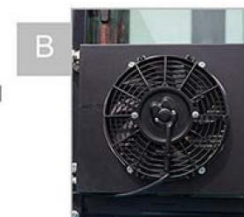
### Canopy

Driving indoor air conditioning, stereo, luxury seats, manipulation and comfortable.



### Boom Side Swing

Meet the needs of small space operations the digger body does not move, only need to adjust the angle of the boom.



### Air Conditioner

Air conditioning heating and cooling speed is fast, and can provide you with a comfortable working environment in winter and summer.



### Steel Track

Steel track can effectively alleviate the working vibration and is suitable for a variety of environment.



### Clamshell Design

Engine cover clamshell design durable and easy to maintain.